

# Indicating Lockout Relay 82440 Series

## GENERAL DESCRIPTION

The No. 82440 Series Indicating Lockout Relay is a two-way, non-adjustable, snap-acting, two-position valve with a fluorescent indicator actuated by a pneumatic pilot signal from a remotely located controlling or transmitting device.

## SPECIFICATIONS

### Construction:

- Mounting plate* ..... 316 stainless steel.
- Body* ..... Cast aluminum
- Springs* ..... Stainless steel
- Diaphragm* ..... Neoprene covered nylon
- Escutcheon* ..... Delrin

**Supply Pressure:** ..... 20 - 50 psi (137.90-344.74kPa).

**Operating Medium:** ..... Air, natural gas (dry sweet) or an inert gas.

### Pressure required at Port "T" to transfer relay:

*Pressure ON Indication:* ..... 14-20 psi  
 (96.53-137.90 kPa).

*Pressure OFF Indication:* ..... 5-14 psi  
 (34.48-96.53 kPa).

**Mounting:** ..... Panel

**Net Weight:** ..... 12 oz.

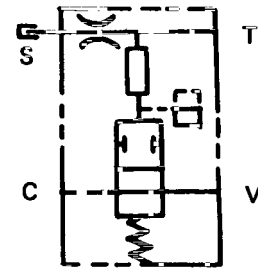
**Dimensions:** ..... See Figure 1

**Connections:** ..... 1/8" - 27 NPT

**Panel Mounting Hole:** ..... 1 3/4" (44.5 mm) diameter

**Min. Recommended Centerline Spacing:** 3" (76.2 mm)

**Panel Thickness:** ..... 3/8" (9.53 mm) maximum



J.I.C. Symbol

MODEL NO.	INDICATION	
	Pressure OFF	Pressure ON
82440-B1	Green	Red
82440-B2	Green	Red/White Striped

## ORDERING INFORMATION

**SPECIFY:** Model No.

## INSTALLATION

### A. General

Pipes and fittings used to connect relay must be free of chips, dirt, moisture or other foreign matter. If thread compound or shellac is used, apply it only above second or third male thread in moderate amounts. Do not allow compound to be deposited inside relay.

For continuous, trouble-free operation, the air supply to the relay must be clean and dry.

### B. Mounting

When installing the No. 82440-Series Lockout Indicator Relay, care must be taken to prevent foreign matter from entering ports.

For panel mounting, provide a 1 3/4" (44.5 mm) diameter hole. Remove escutcheon, insert relay through hole in panel, replace escutcheon and tighten by hand until escutcheon bottoms against the relay housing. To prevent damage of escutcheon, do not use sharp toothed tools, etc. Rotate mounting plats to a position where the screws are readily accessible. Tighten screws to lock relay in place.

### C. Connections

Consult system schematic for proper connections. Typical Application-Port V used as control, Port C as supply and Port T as signal input.

With reduced pressure at Port "T" (signal port), the air at supply Port "C" is free to flow over valve seat and out Port "V." When sufficient pressure is applied to Port "T" (see specification), the detent overcomes retaining Spring 1 and forces the poppet assembly forward closing valve assembly and rotating the indicator flag to the upward position. At this point Port "V" is closed to "C."

As pressure at Port "T" is decreased, supply air from Port "C" forces detent to where Spring 1 retains it until sufficient pressure is re-applied to Port "T." With reduced pressure at Port "T," the opposite indicator flag is exposed and Port "C" is open to Port "V."

See specification for pressures at which the relay is actuated.

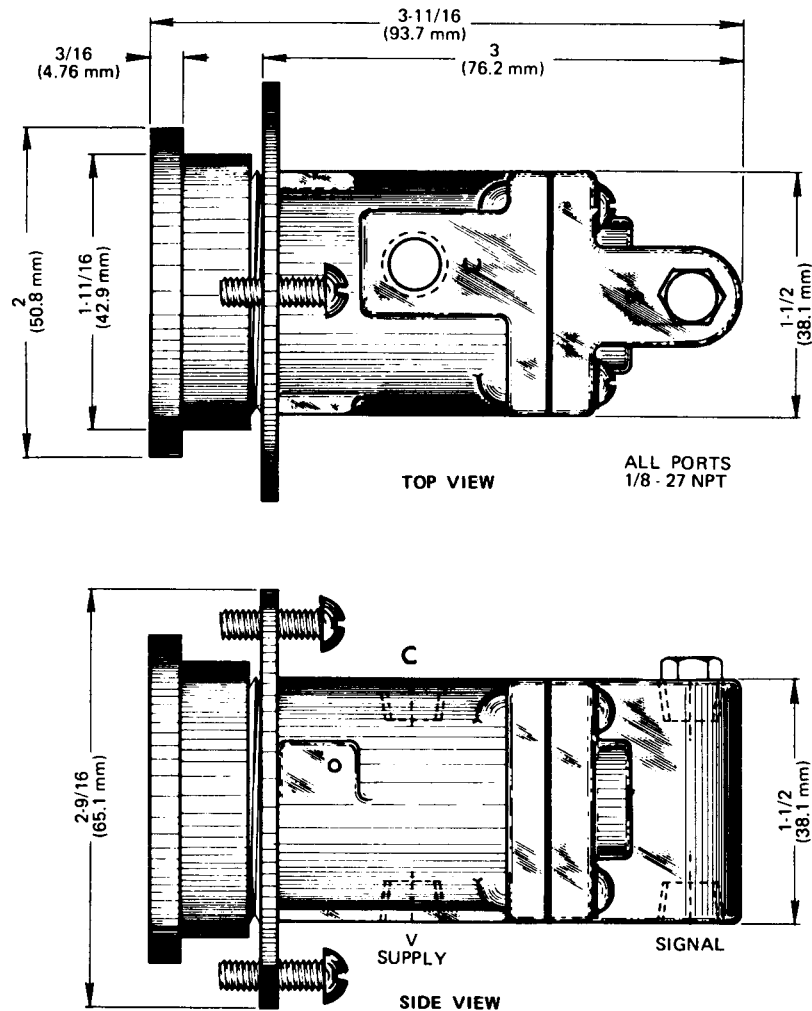
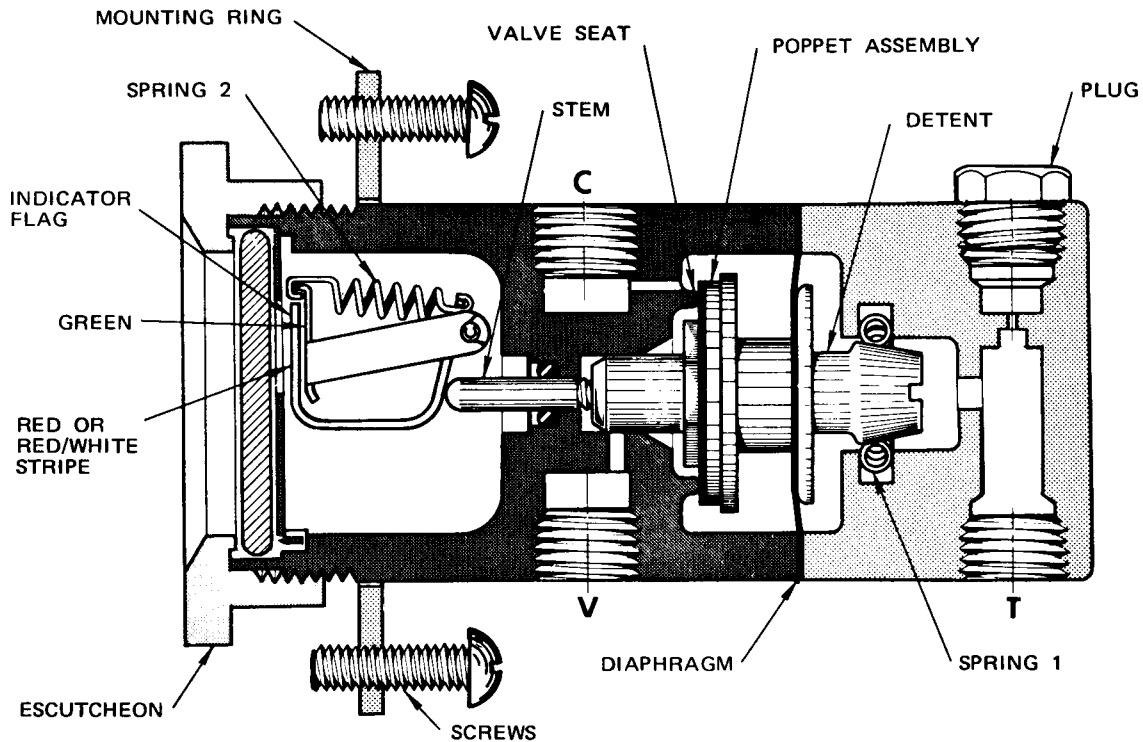


FIGURE 1

## OPERATION



SHOWN WITH PRESSURE APPLIED AT PORT "T"

FIGURE 2

## MAINTENANCE WARNING:

Disassemble carefully - Spring forces present.

If relay does not function properly due to contamination by foreign matter, disassemble and clean all metal parts with cleaning fluid and dry thoroughly.

After reassembly, check for external leakage. Tighten assembly screws as necessary. Gasket cement should not be used to seal leaks due to the possibility of plugging small passages and causing possible damage which might change the operating characteristics of tile diaphragm.

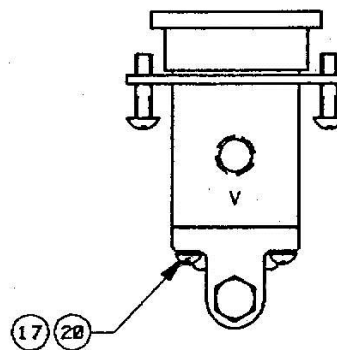
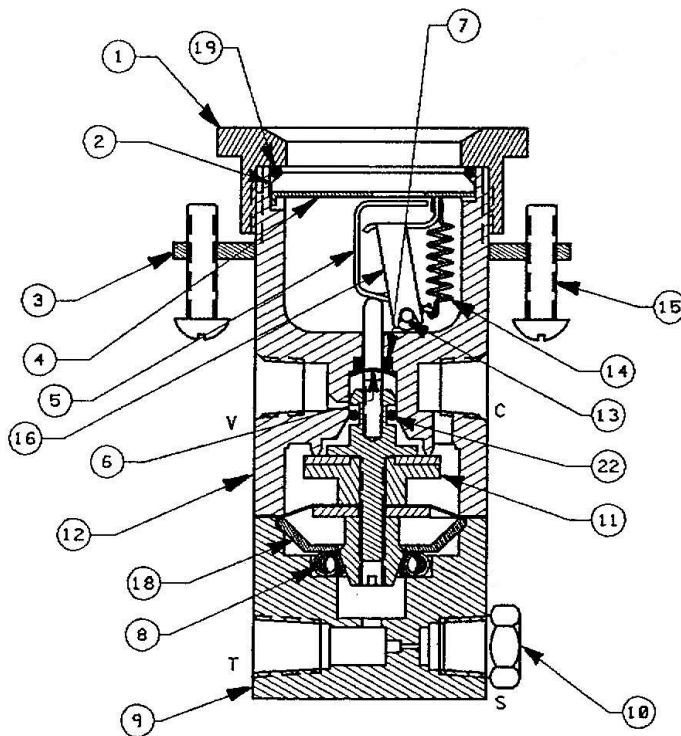
## CAUTION:

If cleaning is required, do not subject o-ring or diaphragm to cleaning fluid, acetone or any halogenated hydrocarbon such as vapor degrease liquid, etc. Clean only with soft, dry cloth.

**PARTS LIST**

Detail No.	No. Req'd	Description	Part No.
1	1	Escutcheon	30201-C1
2	1	Lens	30443-B1
3	1	Plate, Mounting	30444-B1
4	1	Window	30440-A1
5	1	Flag for 82440-B1	30439-B1
		Flag for 82440-B2	83137-B1
6	1	Retainer	36605-B1
7	1	O-Ring	36240-N1006
8	1	Spring	30445-A1
9	1	Cover	30330-B1
10	1	Pipe Plug	30310-G1
11	1	Assy. Poppet & Stem	82110-A1
12	1	Housing	30331-A2
13	1	Roll Pin	36606-A7
14	1	Spring	30441-A1
15	2	Screw	33716-A1710
16	1	Insert, Green	30941-B1
17	4	Screw	33713-J1310
18	1	Plate, Detent	36352-A1
19	1	O-Ring	36290-N0122
20	4	Lockwasher	36600-L0609
22	1	O-Ring	36240-N8

For Maintenance Kit containing O-Rings, Poppet & Stem Assembly and Retainer needed to service one unit, order Repair Kit No. 82665-A4. Kit includes Details 6, 7, 11 & 22.



**Schneider**  
Electric Systems USA, Inc

1602 Mustang Dr  
Maryville, TN 37801  
Ph (865) 981-3100  
FX (865) 981-3168

Q-3966(1-19)

Printed in U.S.A.