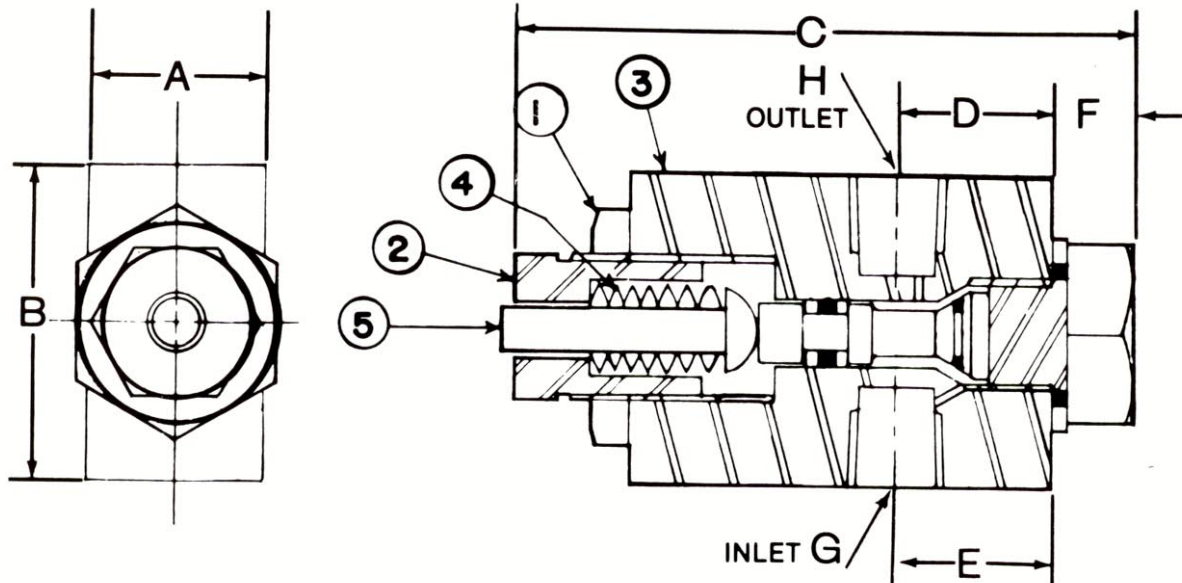


CHEMIQUIP PRESSURE LIMITING VALVE



	A	B	C	D	E	F	G	H
PLV 5460	1"	1¾"	4"	7/8"	7/8"	3/8"	¼" NPT	¼" NPT
PLV 5500	1¼"	2¼"	4"	7/8"	1"	3/8"	½" NPT	½" NPT
PLV 6430	2¼"	2¼"	6½"	2¾"	2¾"	5/8"	9/16 - 18 NF for ¼" OD AMINCO	

ADJUSTMENT INSTRUCTIONS

- To increase pressure, back off lock nut (1), rotate adjustment screw (2) clockwise.
- To decrease pressure, rotate adjustment screw (2) counter-clockwise.
- IMPORTANT—For accurate, repeatable results, it is imperative to relieve upstream pressure to less than set-point before manipulating adjustment screw (2).
- When set, tighten lock nut (1). Adjustment range may be altered by removing adjustment screw (2) completely from valve body (3) and adding or removing disc springs (4) as required. Push rod (5) extends through adjustment screw (2) and moves in accordance with pressure changes. By mounting a micro switch at the end of the push rod (5), the switch may be used for electrically controlling the system.

The valve may be assembled with a snubber at inlet for complete pressure and surge or pulsation control. The snubber will also serve to smooth the reaction of the valve to pressure changes, thus avoiding erratic performance by insuring application of pressure at a constant rate. The valve may be assembled at any point or in any position in an instrument system. Adjacency to the instrument is not important to the proper operation of the valve.

TEMPERATURES RANGE:

Minus 40°C (minus 40°F) to 120°C (248°F).
Temperature range is determined by seals which are used in the valve. Special seals are available to order to increase the temperature range.

ACCURACY

Repeatable accuracy of the valve depends on the rate of pressure rise. However, an accuracy of $\pm 10\%$ of the set pressure may be expected.